



Carolina Valance

9299

This valance consists of **flat sections that can be 12" to 22" wide x 18" deep**. The Euro pleat between them has 5 folds at the top, and 4 bottom shapes to pick from. The returns create a **jabot effect, 23" deep**. All the pattern pieces can be altered in depth.

This valance can hang from holdbacks, or a pole with rings. It can attach with ribbon or pin hooks.

Fabric Suggestions: Soft fabrics and lightweight, crisp fabrics work best. Avoid extremely bulky fabrics. Stripes and plaids work well. Drapery lining can be used for the flat sections and pleats B and C. Pleats A and D will need self or contrast lining, as well as the jabot. Crinoline in the pleats is optional. Interlining is also optional.

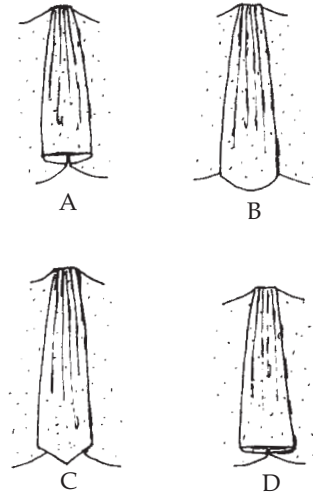


Photo Cover:

Fabrics by: **P Kaufmann**

Valance: **Jungle Boogie** (color) **Banana 474**

Trim: **Conso® 21452HCR04**

Hardware: Unfinished wood finials and rings. Use 3/4" dowels if projection is needed. Decoupage instructions are included.

YARDAGE

Determine how many flat scallop sections you need by simply dividing your window width into equal units of the size you desire, between **12" and 22"**.

With so many different fabric widths and repeats available today, we find it works best if we give you the actual pattern sizes so you can determine how they will fit on your fabric. Pattern pieces can be overlapped to eliminate some of the seams when fabric allows.

Upright cut

12" flat section	the pattern is	14" wide x 19" deep
16" flat sections	the pattern is	18" wide x 19" deep
22" flat sections	the pattern is	24" wide x 19" deep
Pleat A and D	the pattern is	10" wide x 17" deep
Pleat B and C	the pattern is	10" wide x 19" deep
Each jabot	the pattern is	15" wide x 26" deep

Lengthwise Cut: The width measurement will run with the selvage.

Same amount of lining will be needed for all of the above.

Same amount of interlining (optional).

Trims: (Trims must be able to curve)

Each 12" flat section	14"
Each 16" flat section	18"
Each 22" flat section	23"
Each pleat A and D	10"
Each pleat B and C	11"
Each Jabot	20"

You will need the same number of holdbacks, or rings, as you have pleats.

Crinoline is a strip of stiffener (usually 4" deep) that is used for pinch pleated draperies. A stiff interfacing can be used instead. Crinoline is optional, use it only if you prefer.

More detail information about yardage and alterations is give inside packet.