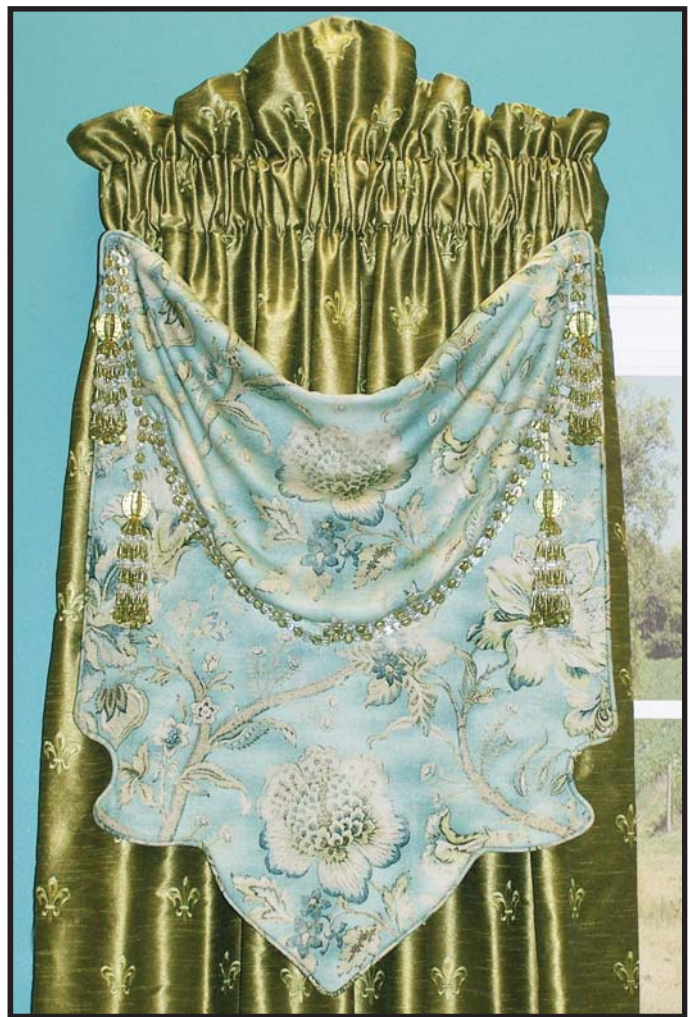


TIP OF THE MONTH SEPTEMBER 2010

WHAT IS A COWL SWAG?

This is a swag that has fullness at the top but the bottom remains flat and smooth. In some cases the bottom could have a different type of fullness. The seam that joins them is hidden by the fullness in the cowl top. Ruffles or other trims can be added into the hidden seam, if desired.

The new M'Fay Pattern 9326 is a cowl swag. Pattern and instructions for the shaped "ripple ruffle" is included in the package.



What is a "Ripple Ruffle"?

The fabric strips are cut in a curve shape. When the seam is clipped the edge can straighten, causing the other side to ripple. There are no pleats or gathers at the inside seam, no bulk.